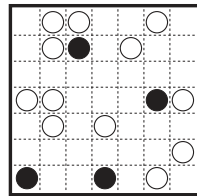


INSTRUCTIONS

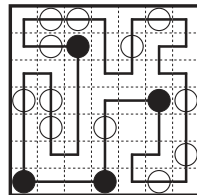
Like most Nikoli puzzles, Masyu begins with a grid of cells. A cell may contain a white circle, a black circle, or no circle at all. The goal is to draw a line that forms a continuous loop that passes through the center of each circle, never crosses itself, and never branches off.

1. A line through a white circle must pass straight through its cell, and make a 90-degree turn in at least one of the cells next to the white circle.
2. A line through a black circle must turn 90 degrees in the circle, and then must go straight through the next cell on either side of its path.

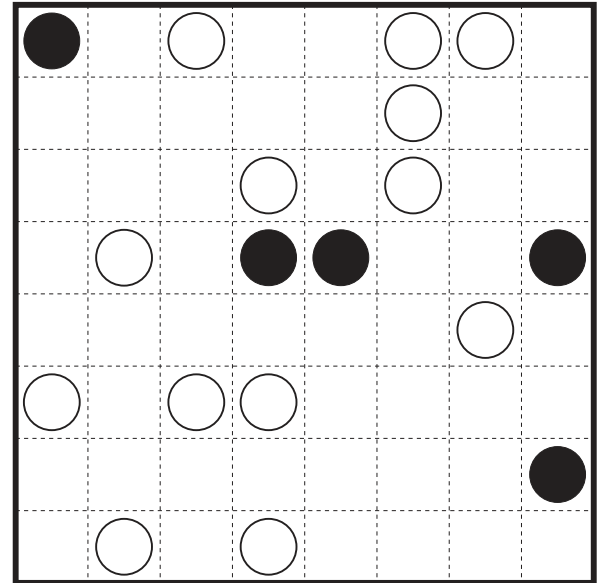
Starting grid



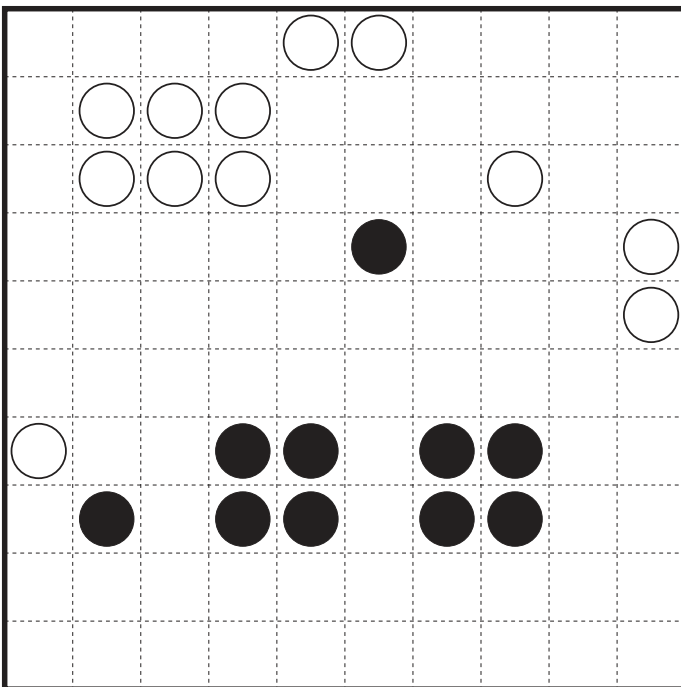
Complete



#1



#2



#3

